

i-teen

# I-Teen Board Game

## Adults in Stand-by



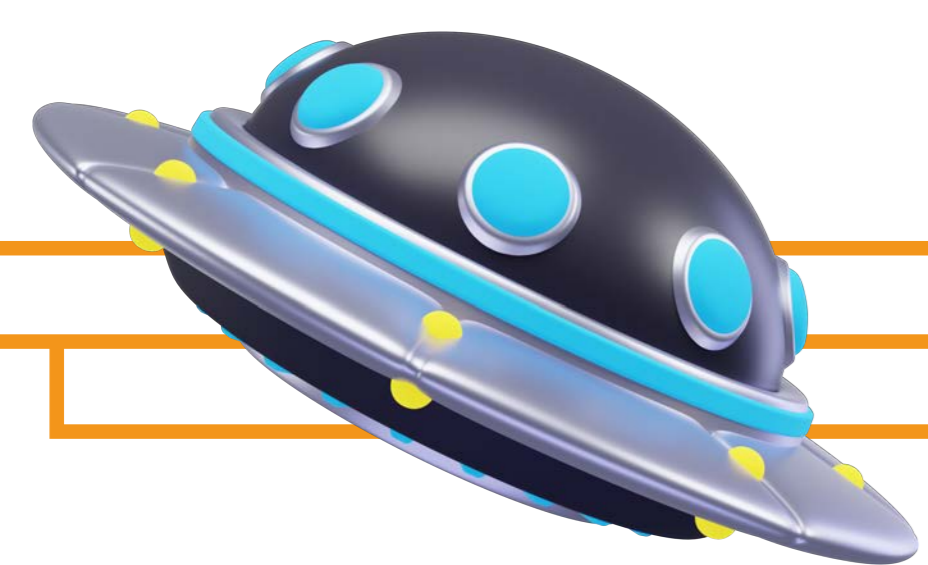
Co-funded by  
the European Union

Funded by the European Union. Views and opinions expressed are however those of the author(s) only and do not necessarily reflect those of the European Union or the European Education and Culture Executive Agency (EACEA). Neither the European Union nor EACEA can be held responsible for them.  
pr.n.2022-1-IT02-KA220-SCH-000087032

Objective



Aliens have attacked Earth, and due to mysterious radiation, everyone has become unable to move, make decisions, and perform daily tasks. Except for the young. Students must take control of the world and the global network and must preserve the environment, facing various challenges related to cybersecurity, malware attacks, and environmental protection on Earth. Each student assumes the role of a cybersecurity expert and environmental guardian with the task of defending the world.

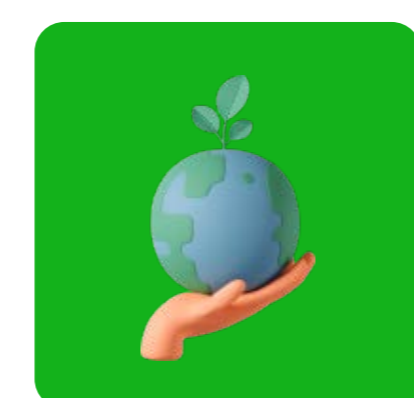


Game Rules

The game is played on a board with 48 spaces. Players move forward by the number of spaces indicated by the roll of a single die. The board contains:



**8 Cybersecurity Challenge spaces**



**8 Environmental Challenge spaces**



**8 HI-speed spaces**



**8 "Unexpected" spaces**

Each player receives a "guardian" card representing their cybersecurity expert or environmental guardian.

**"Challenge" cards**

The "Challenge" cards are shuffled and arranged into two separate decks: one for cybersecurity challenges and one for environmental challenges.



If a player lands on a **cyber security "Challenge" square** they must solve the problem described on the card. The card is drawn and read aloud by an opposing player. If the player to whom the question was asked answers correctly he moves forward 3 spaces, if he answers incorrectly he takes 3 steps back on the board.



If a player lands on a **environmental "Challenge" square** they must solve the problem described on the card. The card is drawn and read aloud by an opposing player. If the player to whom the question was asked answers correctly he moves forward 3 spaces, if he answers incorrectly he takes 3 steps back on the board.



If a player lands on an "Unexpected" square, they must accept the fate that has been reserved for them.



If a player lands on a "High-Speed" square, they have the option to roll the dice again.



Players take turns rolling the dice and moving their pieces forward a number of spaces equal to the number shown on the dice.

**Victory:**

The player who reaches the finish line first wins.

The board game is divided into four A4 sheets. They need to be printed and assembled as shown in the following image.

All the cards should be cut along the line that separates them.



UNFORESEEN EVENT CARDS FOR CYBERSECURITY	UNFORESEEN EVENT CARDS FOR CYBERSECURITY	UNFORESEEN EVENT CARDS FOR CYBERSECURITY	UNFORESEEN EVENT CARDS FOR CYBERSECURITY
<p>Your computer has been infected by a virus that deleted important work files. <b>Skip a turn while you attempt to recover the data.</b></p> 	<p>Your company network suffered a DDoS attack, rendering it unusable. <b>Skip a turn while the technical team restores service.</b></p> 	<p>Your password was compromised, but you changed it in time. Well done. <b>Roll the dice again.</b></p> 	<p>Ransomware encrypted all your files. <b>Skip a turn while you attempt to decrypt or restore them from a backup.</b></p> 
<p>You received a phishing email and inadvertently provided personal information. <b>Skip a turn while you address the situation.</b></p> 	<p>Your network firewall was disabled by an external attack. <b>Skip a turn while you re-enable and properly configure it.</b></p> 	<p>A keylogger was installed on your computer. <b>Skip a turn while you remove the malware and change your passwords.</b></p> 	<p>Your personal data was exposed in a security breach. <b>Skip a turn while you take steps to protect your identity.</b></p> 

21

HI-speed



22

23

Cybersecurity Challenge



24

25



44

Environmental Challenge



45

HI-speed



46

47

Cybersecurity Challenge



48

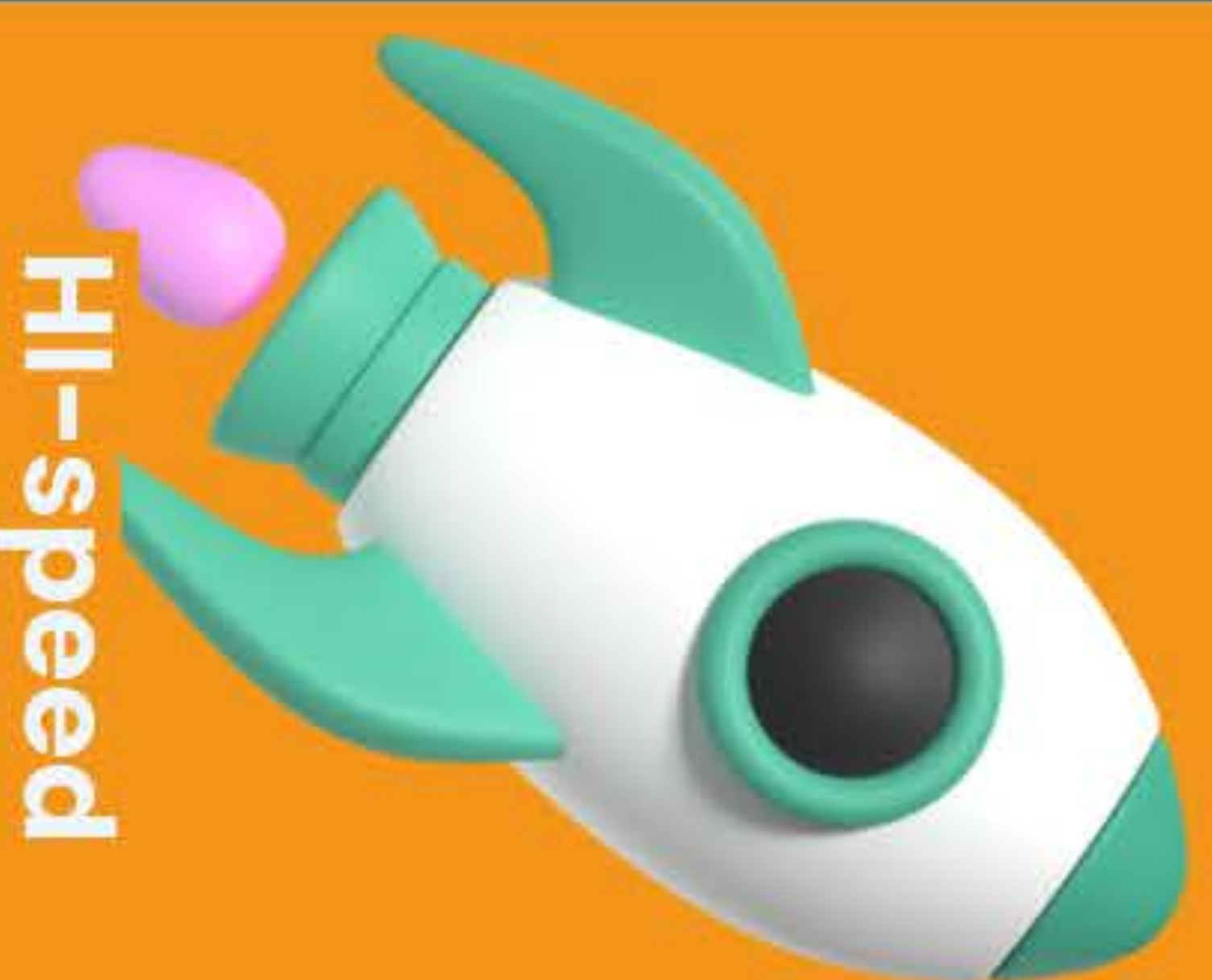
FINISH

26



Unexpected

27



HI-speed

28



Environmental Challenge

# ADULTS IN

13




HI-speed

14



Environmental Challenge

15



Unexpected

16

17



Cybersecurity Challenge

18

19



Environmental Challenge

20



Unexpected

39

40



HI-speed

41



Cybersecurity Challenge

42

43



Unexpected



29

Cybersecurity  
Challenge



30

31



Unexpected

32



Environmental  
Challenge

33



HI-speed

34

1

START

2



HI-speed

3



Unexpected

4

# STAND-BY

35



Cybersecurity  
Challenge

36

37



Environmental  
Challenge

38



Unexpected

12



Cybersecurity  
Challenge

11



10



Unexpected

5



Environmental  
Challenge

6



Cybersecurity  
Challenge

7

8



AI-speed

9



Environmental  
Challenge

GUARDIAN CARD



**I-tech  
guardian**

GUARDIAN CARD



**Sea  
guardian**

GUARDIAN CARD



**City  
guardian**

GUARDIAN CARD



**Green  
guardian**

## UNFORESEEN EVENT CARDS FOR CYBERSECURITY

Your computer has been infected by a virus that deleted important work files.

**Skip a turn while you attempt to recover the data.**



## UNFORESEEN EVENT CARDS FOR CYBERSECURITY

Your company network suffered a DDoS attack, rendering it unusable.

**Skip a turn while the technical team restores service.**



## UNFORESEEN EVENT CARDS FOR CYBERSECURITY

Your password was compromised, but you changed it in time. Well done.

**Roll the dice again.**



## UNFORESEEN EVENT CARDS FOR CYBERSECURITY

Ransomware encrypted all your files.

**Skip a turn while you attempt to decrypt or restore them from a backup.**



## UNFORESEEN EVENT CARDS FOR CYBERSECURITY

You received a phishing email and inadvertently provided personal information.

**Skip a turn while you address the situation.**



## UNFORESEEN EVENT CARDS FOR CYBERSECURITY

Your network firewall was disabled by an external attack.

**Skip a turn while you re-enable and properly configure it.**



## UNFORESEEN EVENT CARDS FOR CYBERSECURITY

A keylogger was installed on your computer.

**Skip a turn while you remove the malware and change your passwords.**



## UNFORESEEN EVENT CARDS FOR CYBERSECURITY

Your personal data was exposed in a security breach.

**Skip a turn while you take steps to protect your identity.**



**UNFORESEEN EVENT CARDS  
FOR CYBERSECURITY**

A trojan horse was discovered on your device.

**Skip a turn while you perform a full scan and remove the malware.**



**UNFORESEEN EVENT CARDS  
FOR CYBERSECURITY**

A spoofing attack tricked your authentication system.

**Skip a turn while you strengthen security measures.**



**UNFORESEEN EVENT CARDS  
FOR CYBERSECURITY**

A colleague inadvertently shared an infected file with you. But you were vigilant and didn't open it.

**Roll the dice again.**



**UNFORESEEN EVENT CARDS  
FOR CYBERSECURITY**

Your antivirus software is outdated, leaving a vulnerability.

**Skip a turn while you update and clean your system.**



**UNFORESEEN EVENT CARDS  
FOR CYBERSECURITY**

An automatic backup failed, causing data loss.

**Skip a turn while you attempt to recover the data.**



**UNFORESEEN EVENT CARDS  
FOR CYBERSECURITY**

A zero-day vulnerability was discovered in your operating system.

**Skip a turn while you install the security patch.**



**UNFORESEEN EVENT CARDS  
FOR CYBERSECURITY**

Your social media account was hacked, and malicious content was posted.

**Skip a turn while you regain control and clean up the profile.**



**UNFORESEEN EVENT CARDS  
FOR ENVIRONMENTAL  
SECURITY**

An oil spill contaminated a local nature reserve.

**Skip a turn while coordinating cleanup and damage mitigation.**



**UNFORESEEN EVENT CARDS  
FOR ENVIRONMENTAL  
SECURITY**

A wildfire destroyed a protected area.

**Skip a turn while organizing habitat restoration.**



**UNFORESEEN EVENT CARDS  
FOR ENVIRONMENTAL  
SECURITY**

A storm knocked down many trees in a park.

**Skip a turn while working on removal and reforestation.**



**UNFORESEEN EVENT CARDS  
FOR ENVIRONMENTAL  
SECURITY**

An illegal dump site was discovered in a wetland thanks to your report.

**Roll the dice again.**



**UNFORESEEN EVENT CARDS  
FOR ENVIRONMENTAL  
SECURITY**

An invasion of alien species threatens the biodiversity of a protected area.

**Skip a turn while working on their eradication.**



**UNFORESEEN EVENT CARDS  
FOR ENVIRONMENTAL  
SECURITY**

A chemical spill from an industrial plant contaminated a river.

**Skip a turn while managing the cleanup.**



**UNFORESEEN EVENT CARDS  
FOR ENVIRONMENTAL  
SECURITY**

A heatwave caused the death of numerous fish in a lake.

**Skip a turn while addressing the situation and seeking long-term solutions.**



**UNFORESEEN EVENT CARDS  
FOR ENVIRONMENTAL  
SECURITY**

A coastal area eroded more than expected due to climate change.

**Skip a turn while planning protection measures.**



**UNFORESEEN EVENT CARDS  
FOR ENVIRONMENTAL  
SECURITY**

A construction project violated environmental regulations, but you reported it.  
**Roll the dice again.**



**UNFORESEEN EVENT CARDS  
FOR ENVIRONMENTAL  
SECURITY**

Air quality drastically worsened due to industrial emissions.  
**Skip a turn while addressing the emergency.**



**UNFORESEEN EVENT CARDS  
FOR ENVIRONMENTAL  
SECURITY**

A hazardous waste dump was found near an aquifer.  
**Skip a turn while managing the situation.**



**UNFORESEEN EVENT CARDS  
FOR ENVIRONMENTAL  
SECURITY**

A flood devastated an agricultural area, washing away fertile soil.  
**Skip a turn while coordinating restoration efforts.**



**UNFORESEEN EVENT CARDS  
FOR ENVIRONMENTAL  
SECURITY**

A water treatment plant malfunctioned, contaminating a water reserve.  
**Skip a turn while fixing the problem.**



**UNFORESEEN EVENT CARDS  
FOR ENVIRONMENTAL  
SECURITY**

The construction of a new road disrupted wildlife corridors.  
**Skip a turn while working to restore the passage.**



**UNFORESEEN EVENT CARDS  
FOR ENVIRONMENTAL  
SECURITY**

An endangered animal population has declined drastically.  
**You skip a turn while taking action to protect it.**



## ENVIRONMENTAL SAFETY CHALLENGE CARDS

Which gas is considered the main contributor to the greenhouse effect?

- A. Oxygen
- B. Nitrogen
- C. Carbon Dioxide**
- D. Helium



## ENVIRONMENTAL SAFETY CHALLENGE CARDS

What term refers to the loss of biodiversity caused by human activity?

- A. Desertification
- B. Deforestation**
- C. Mass extinction
- D. Eutrophication



## ENVIRONMENTAL SAFETY CHALLENGE CARDS

Which of the following is a renewable energy source?

- A. Coal
- B. Oil
- C. Solar energy**
- D. Natural gas



## ENVIRONMENTAL SAFETY CHALLENGE CARDS

What is meant by "noise pollution"?

- A. Emission of toxic gases
- B. Water contamination
- C. Non-biodegradable solid waste
- D. Excessive noise**



## ENVIRONMENTAL SAFETY CHALLENGE CARDS

What is the main environmental problem caused by excessive use of plastic?

- A. Sea level rise
- B. Ocean contamination**
- C. Increase in greenhouse gases
- D. Deforestation



## ENVIRONMENTAL SAFETY CHALLENGE CARDS

What is the main goal of the Kyoto Protocol?

- A. Protect endangered species
- B. Reduce greenhouse gas emissions**
- C. Promote fossil fuel use
- D. Increase agricultural production



## ENVIRONMENTAL SAFETY CHALLENGE CARDS

Which of the following practices is considered sustainable for agriculture?

- A. Intensive use of chemical pesticides
- B. Monoculture
- C. Crop rotation**
- D. Deforestation to expand farming



## ENVIRONMENTAL SAFETY CHALLENGE CARDS

What is the main impact of ocean acidification?

- A. Increase in water temperature
- B. Reduction in marine biodiversity**
- C. Growth of coral reefs
- D. Improvement of water quality



## ENVIRONMENTAL SAFETY CHALLENGE CARDS

What does the term "ecological footprint" represent?

- A. The amount of CO2 produced by an individual
- B. The overall environmental impact of human activities**
- C. The amount of waste produced in a year
- D. A nation's water consumption



## ENVIRONMENTAL SAFETY CHALLENGE CARDS

Which of the following is not a direct consequence of deforestation?

- A. Habitat loss
- B. Soil erosion
- C. Increase in biodiversity**
- D. Climate changes



## ENVIRONMENTAL SAFETY CHALLENGE CARDS

Which technique is used to reduce water consumption in agriculture?

- A. Sprinkler irrigation
- B. Drip irrigation**
- C. Use of chemical fertilizers
- D. Burning crop residues



## ENVIRONMENTAL SAFETY CHALLENGE CARDS

What is the main purpose of protected areas like national parks?

- A. Expand urbanization
- B. Promote mass tourism
- C. Preserve biodiversity**
- D. Support the mining industry



## ENVIRONMENTAL SAFETY CHALLENGE CARDS

Which activity contributes most to the formation of urban "heat islands"?

- A. Presence of vegetation
- B. Use of reflective building materials
- C. Emission of greenhouse gases
- D. Asphalt and concrete**



## ENVIRONMENTAL SAFETY CHALLENGE CARDS

What does "biodegradable" mean?

- A. A material that can be recycled indefinitely
- B. A material that decomposes naturally**
- C. A chemical cleaning product
- D. A type of fossil fuel



## ENVIRONMENTAL SAFETY CHALLENGE CARDS

What is one of the main goals of the United Nations' Agenda 2030?

- A. Expand industrial activities
- B. Reduce inequalities**
- C. Increase oil production
- D. Build more nuclear power plants



## ENVIRONMENTAL SAFETY CHALLENGE CARDS

Which gas contributes most to acid rain?

- A. Oxygen
- B. Methane
- C. Sulfur dioxide**
- D. Nitrogen



**ENVIRONMENTAL SAFETY  
CHALLENGE CARDS**

What is "desertification"?

- A. Converting arid lands into farmland
- B. Turning fertile lands into deserts**
- C. Flooding coastal areas
- D. Reforesting deforested areas



**ENVIRONMENTAL SAFETY  
CHALLENGE CARDS**

What is the main advantage of wind energy over fossil fuels?

- A. Higher CO2 production
- B. Less dependence on the sun
- C. No greenhouse gas emissions**
- D. Continuous energy production



**ENVIRONMENTAL SAFETY  
CHALLENGE CARDS**

What is the primary effect of coral reef loss?

- A. Increase in tourism
- B. Reduction in marine biodiversity**
- C. Growth of fish populations
- D. Improvement in water quality



**ENVIRONMENTAL SAFETY  
CHALLENGE CARDS**

Which of the following is not a sustainable waste management practice?

- A. Recycling
- B. Composting
- C. Incineration without energy recovery**
- D. Reducing waste at the source



## CYBERSECURITY CHALLENGE CARDS

What is the most common method for stealing user login credentials?

- A. Phishing**
- B. DDoS
- C. Ransomware
- D. SQL Injection



## CYBERSECURITY CHALLENGE CARDS

Which hacking technique exploits software vulnerabilities to gain unauthorized access to data?

- A. Man-in-the-Middle
- B. Exploit**
- C. Sniffing
- D. Brute Force



## CYBERSECURITY CHALLENGE CARDS

What term describes the process of converting data into an unreadable format to protect it?

- A. Hashing
- B. Firewalling
- C. Encrypting**
- D. Defragmenting



## CYBERSECURITY CHALLENGE CARDS

Which of the following is not a physical security measure for protecting data?

- A. Firewall**
- B. Access control
- C. Surveillance systems
- D. Security locks



## CYBERSECURITY CHALLENGE CARDS

What does "2FA" stand for?

- A. Two-Factor Authentication**
- B. Two-Face Algorithm
- C. Twin File Access
- D. Temporary File Authorization



## CYBERSECURITY CHALLENGE CARDS

What is the primary purpose of a firewall?

- A. Speed up the internet connection
- B. Block unauthorized access to the network**
- C. Backup data
- D. Detect viruses in the system



## CYBERSECURITY CHALLENGE CARDS

Which of these is software designed to detect and remove malware?

- A. Browser
- B. Antivirus**
- C. Spreadsheet
- D. Media Player



## CYBERSECURITY CHALLENGE CARDS

Which type of attack involves sending an excessive amount of traffic to a server to make it inaccessible?

- A. Phishing
- B. DDoS**
- C. Keylogging
- D. Spoofing



## CYBERSECURITY CHALLENGE CARDS

What does the term "malware" indicate?

- A. Defective hardware
- B. A type of firewall
- C. Malicious software**
- D. A programming language



## CYBERSECURITY CHALLENGE CARDS

Which of the following practices is not an example of good cybersecurity hygiene?

- A. Using complex passwords
- B. Regularly updating software
- C. Sharing passwords with friends**
- D. Using antivirus software



## CYBERSECURITY CHALLENGE CARDS

What is a "keylogger"?

- A. A device to test networks
- B. A program that records keystrokes**
- C. A type of malware that encrypts files
- D. A hardware firewall



## CYBERSECURITY CHALLENGE CARDS

Which of the following is a social engineering attack?

- A. SQL Injection
- B. Phishing**
- C. Man-in-the-Middle
- D. IP Spoofing



## CYBERSECURITY CHALLENGE CARDS

What is "ransomware"?

- A. Software that spies on user activity
- B. Software that demands a ransom to restore encrypted data**
- C. An advanced type of firewall
- D. A two-factor authentication system



## CYBERSECURITY CHALLENGE CARDS

Which protocol is used to ensure a secure web connection?

- A. HTTP
- B. FTP
- C. SMTP
- D. HTTPS**



## CYBERSECURITY CHALLENGE CARDS

What is the main function of antivirus software?

- A. Improve internet speed
- B. Protect data from viruses and malware**
- C. Create file backups
- D. Manage the local network



## CYBERSECURITY CHALLENGE CARDS

Which of the following techniques is used to hide sensitive data in transit?

- A. Steganography
- B. Compression
- C. Encryption**
- D. Defragmentation



## CYBERSECURITY CHALLENGE CARDS

Which of the following measures is not typically used for online privacy protection?

- A. VPN
- B. Tracking cookies**
- C. Proxy server
- D. Private browser



## CYBERSECURITY CHALLENGE CARDS

What is a "zero-day vulnerability"?

- A. A rapidly spreading computer virus
- B. A security flaw unknown to developers**
- C. An attack that temporarily blocks web services
- D. A data backup technique



## CYBERSECURITY CHALLENGE CARDS

What is "pharming"?

- A. An attack that alters DNS records**
- B. Sending phishing emails
- C. A DDoS attack
- D. An encryption technique



## CYBERSECURITY CHALLENGE CARDS

Which of the following is not a form of multifactor authentication?

- A. Password
- B. Fingerprint
- C. SMS verification code
- D. CAPTCHA**

